

Climate change and health – update



Pennie Brown, Strategy Manager, East Hampshire District Council
Sian Davies, Hampshire County Council
Lyndsey Jones, Hampshire & Isle of Wight Integrated Commissioning Board
Chitra Nadarajah, Hampshire County Council

Summary: Climate Change and Health

HEALTH EQUITY

Risks,
opportunities,
and benefits of
further action



More action needed

Further investigation

Sustain current action

Maintain a
watching brief

Average UK wide scores

H1. Risks to health and wellbeing from high temperatures

H2. Opportunities for health and wellbeing from higher temperatures

H3. Risks to people, communities, and buildings from flooding

H12. Risks to health and social care delivery from extreme weather

H13. Risks to prison and education services from extreme weather

H7. Risks to health and wellbeing from changes to indoor and outdoor air quality

H8. Risks to health from vector borne diseases

ID9. Risk to UK public health from climate change overseas

H10. Risks to health from poor water quality or supply interruptions

Indirect risks:

1. Higher prices for food, water, energy
2. Damp and cold homes
3. Loss of livelihoods
4. Reduction in habitable land
5. Migration

Summary: Climate Change and Health

HEALTH EQUITY

Mitigation

- Organisational strategies & plans
- Transport
- Placemaking
- Housing
- Energy
- Food
- Economy (job creation)

Adaptation

- Robust assessment of impact, planning & response
- Built environment
- Urban green space
- Site specific adaptations, building design & retrofit
- Community resilience

Impact

- Morbidity & mortality from rising temperatures & extreme weather events
- Vector born disease transmission
- Air quality
- Food insecurity & safety
- Service delivery

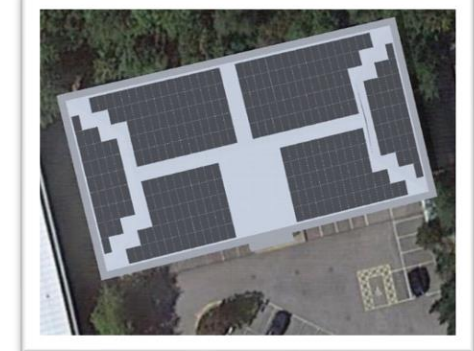
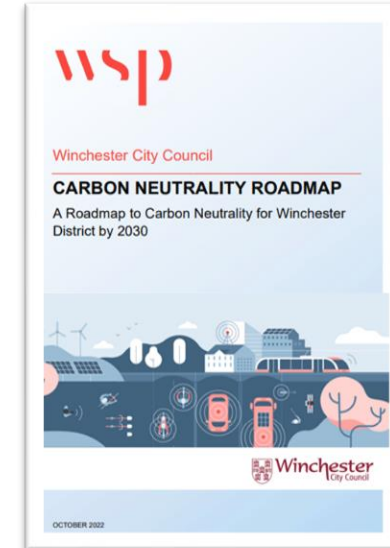


Districts and Boroughs – Key Priorities linked to Climate Change

- Get our own house in order – lead by example
- Empower community action on climate action
- Learn and sharing best practice with stakeholders and across our districts -
- Represent our communities -unblock barriers
- Work together to collectively support climate action

Best Practice Examples in Hampshire

- Winchester City Council - 2024 Net Zero Target. Work closely with WINACC
- Hart District Council - reducing the footprint of their own buildings
- East Hampshire District Council - New Green Head Quarters, Community action with PECAN & ACAN, Community Climate Action Fund (CCAF) £250,000
- Hampshire Wide Climate Change Officers Group - HCOG

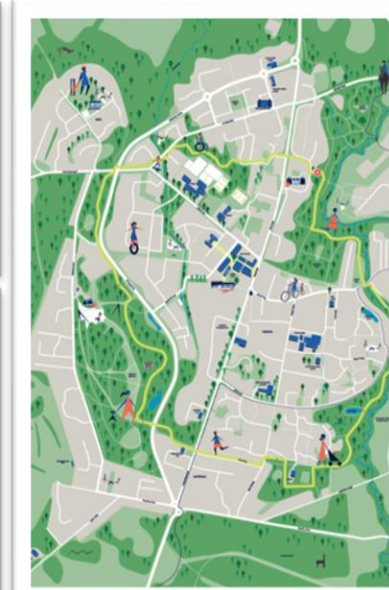


Districts and Boroughs – Climate Mitigation Action

- Reduce emissions from new homes
- Reduce emission from existing homes
- Reducing emissions from own estate
- Sustainable transport – EV Infrastructure
- Active Travel - improved walking and cycling
- Tree Planting Programmes
- Placemaking

Best Practice Examples in Hampshire

- Planning for Climate Change - SPD – East Hants DC Adopted, New Forest DC Draft
- East Hants DC COSY Retrofit Scheme – 100 % Interest Free Loans
- New Forest DC Greener Housing Strategy 2022 to 2032
- EV infrastructure – Hart DC EVCP Initiatives
- Active Travel – Whitehill & Bordon Green Loop and Wayfinding Project, Winchester CC Movement Strategy, Hart DC Green Grid Strategy, LCWIP – All
- Whitehill & Bordon Healthy New Town Project

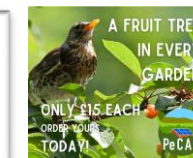
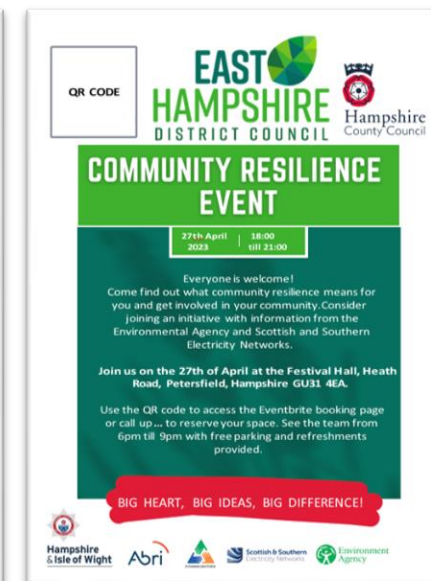
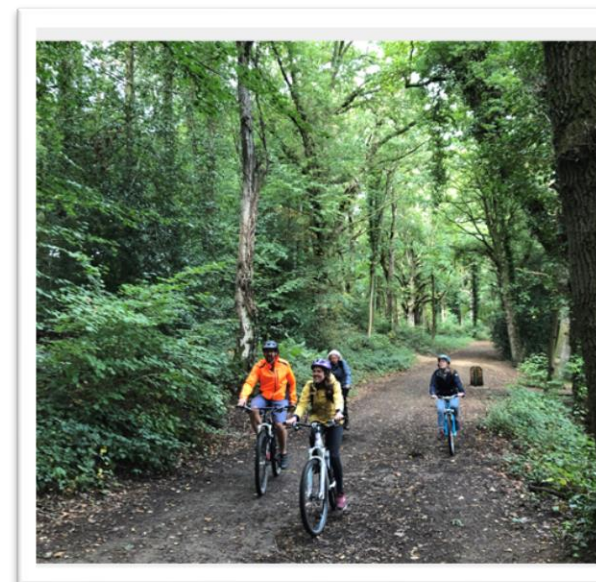


Districts and Boroughs – Adaptation and Resilience Action

- Increasing local climate resilience-emergency planning
- Planning Policy - Adaptation in new homes
- Plan and deliver green infrastructure
- Councils' own adaption

Best Practice Examples in Hampshire

- Community resilience workshops
- Planning for Climate Change
- Dedicated Flooding resource – Hart DC Flooding officer
- Tree Planting - EHDC Tree target 120,000, Hart DC Tree Strategy
- Food Resilience - Growing Projects EHDC Grow Up! (UKSPF)
- Green Infrastructure – Whitehill & Bordon Green Loop (<https://www.youtube.com/watch?v=-wf5Fe6EnRo>), Hart DC Green Infrastructure Strategy



Hampshire County Council: Climate Change Strategy

Key priorities

- Lead, influence and advocate for action by all
- Engaging with residents on behaviour and lifestyle choices
- Learning and sharing best practice with key partners
- Engaging with seldom heard communities, children and young people

Mitigation

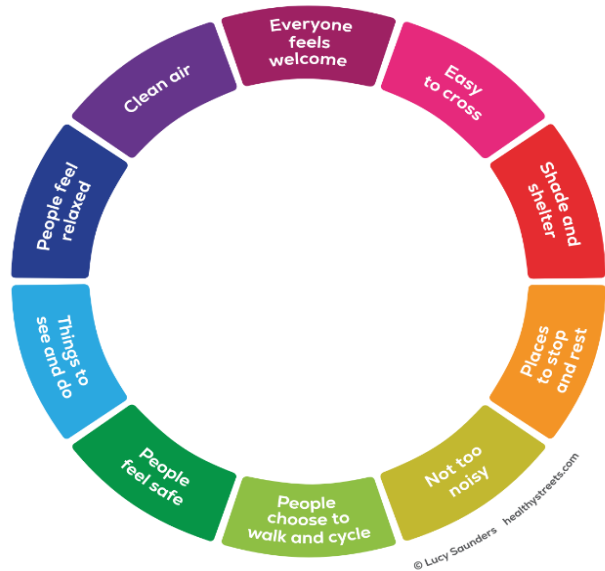
- Transport emissions - increase walking/cycling & use of public transport and transition to greener modes
- Residential emissions – energy savings, and efficiency through retrofit and behaviour and lifestyle choices
- Energy as a whole system - generation, distribution & efficiency

Adaptation

- Building community and individual resilience to impacts like flooding and heatwaves
- Resilience of infrastructure and services
- Natural environment

Hampshire County Council climate change action



Healthy Streets




A people-centred framework for embedding public health in transport, public realm and planning.


Retrofit

Future potential

Disruptive measures include:
internal and external solid **wall insulation** ... 
 ... and **floor insulation**.

For Hampshire to reach Net Zero, including disruptive measures, requires a private investment of:

Total: **£29.6 billion** 

Average per residential property: **£33,520** 

Mean tonnes of CO₂ per property following investment: **0.09 tonnes**

Full-time equivalent jobs per year (2022-2050): **6,207 jobs**

Greening campaign

Greening the Country, Community by Community

We all feel overwhelmed by the enormity of Climate Change but if we all just focus on our own community, we can create a patchwork of 'green communities' right across the country. It's up to us!



NHS Green Plan

Key priorities

- Identify areas where working together at scale will accelerate progress towards net zero
- Implement the ICB Clean Air Framework across HIOW with partners
- Work with GPs to support delivery in primary care

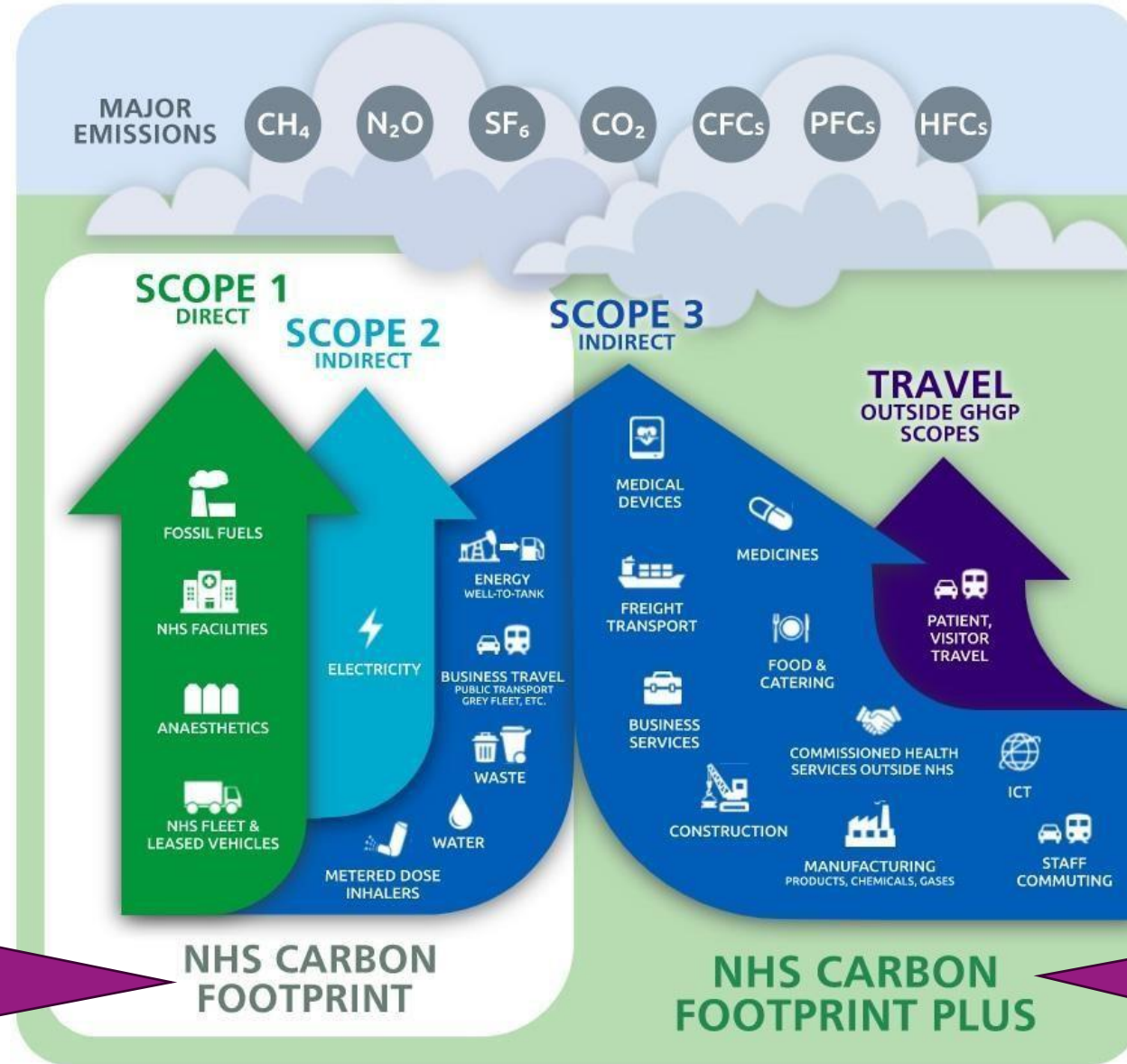
Mitigation

- Overarching and comprehensive Green Plan in place for ICB and member Trusts
- Developing networks with partners to support delivery

Adaptation

- Developing a Climate Impact Assessment for Health
- Working with member Trusts and Emergency Resilience teams on a common approach to adaptation

The NHS Carbon Footprint



NHS Target:
Net Zero by
2040

NHS Target:
Net Zero by
2045

- Net zero embedded into legislation, through the [Health and Care Act 2022](#).
- Duties on NHS organisations to contribute towards statutory emissions and environmental targets.
- The Act requires commissioners and providers of NHS services specifically to address the net zero emissions targets.
- It also covers measures to adapt to any current or predicted impacts of climate change identified within the 2008 Climate Change Act.

What have we done as an ICS?

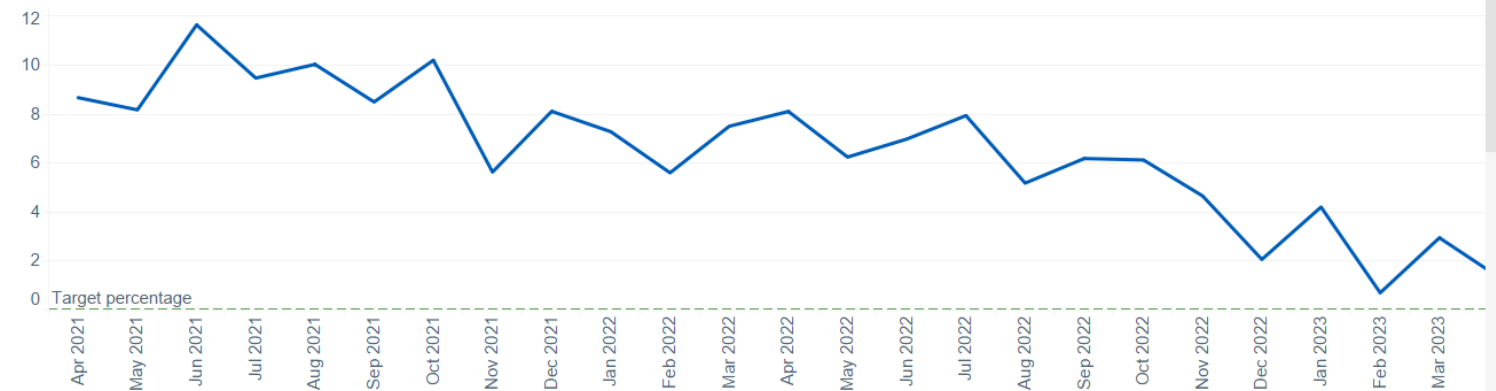
- Each NHS organisation produced its Green Plan by January 2022
- The ICS has developed a draft Green Plan (March 2022) and is now in the implementation phase
- Mature ICS Sustainability group, with representation from Trust sustainability leads, ICB, NHS England and other partners

What do we still need to do?

- Make sustainability part of our every day working life
- Promote the good work that we are doing by sharing best practice
- Ensure that we commission services and buy goods and services in a way which promotes sustainability and greener solutions
- Produce compelling business cases for investment into net zero initiatives
- Primary Care? (23% of NHS emissions)

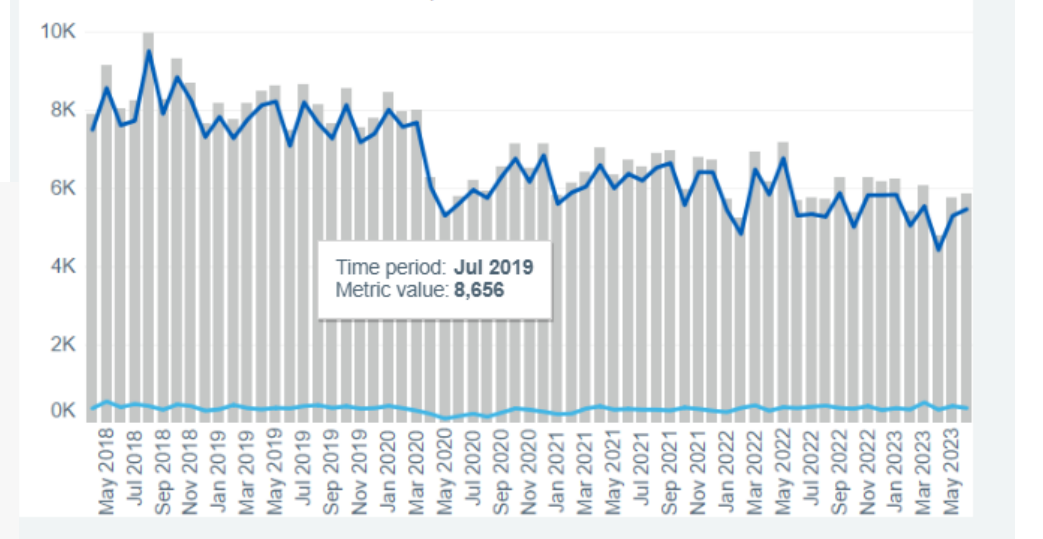
Desflurane as a percentage (%) of all volatile anaesthetic gases

Litres of desflurane divided by the litres of all volatile anaesthetic gases issued by trust pharmacy system (Note: this includes waste and returns). A downward trend shows a lower usage of desflurane

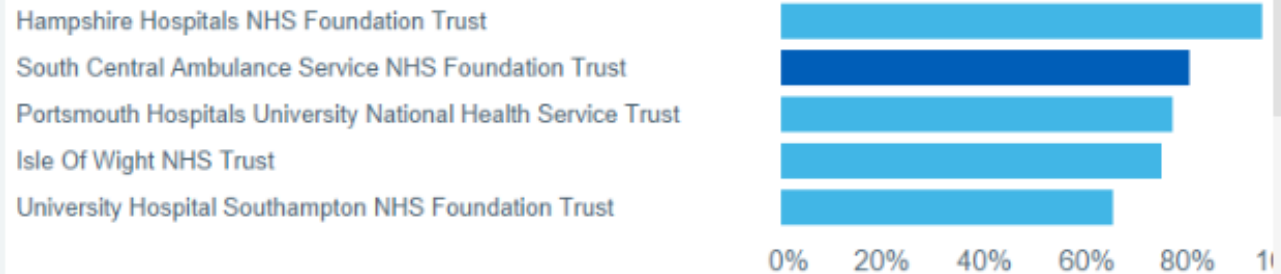


Emissions (tCO2e) from nitrous oxide

The carbon equivalent emissions (tCO2e) of nitrous oxide procured to trusts, split into manifold and portable cylinders. A downward trend in manifold cylinders is likely to indicate a reduction in waste. Bars show the total of the lines selected on the dropdown above.

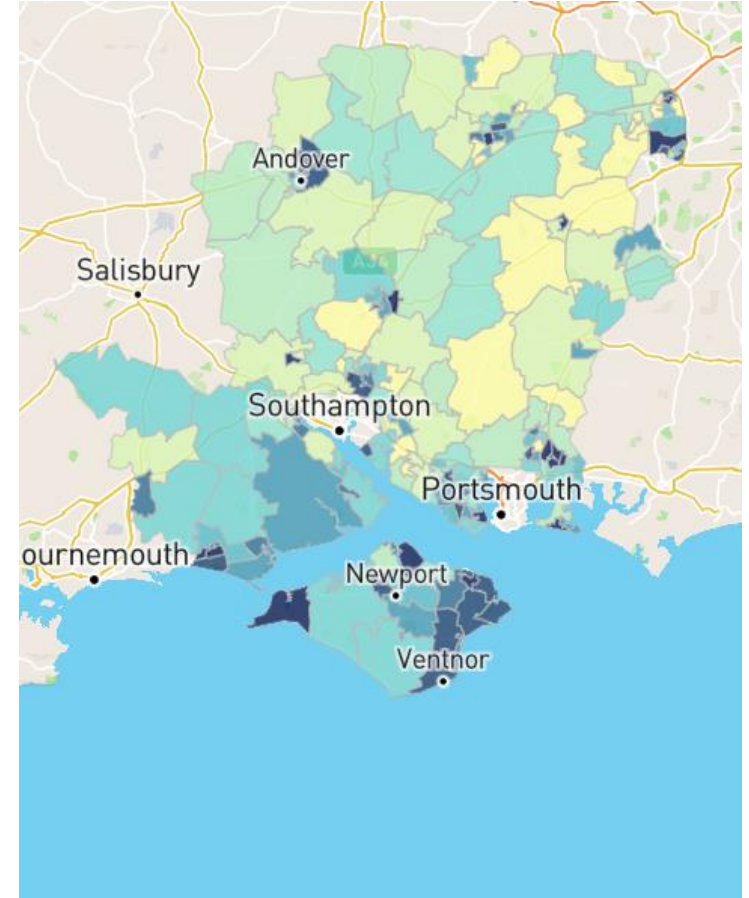


Percentage of fleet vehicles meeting standard % LEV - by trust



Recommendations

1. Recognise the implications of climate change for health and the opportunities for improving health whilst reducing carbon emissions.
2. To note the highlighted constituent organisations priorities and actions on climate change and for all organisations to consider their role in climate change mitigation and adaptation.
3. Ensure climate change adaptation and mitigation measures consider impacts on health inequalities.
4. That Board members seek opportunities to collaborate on measures to mitigate and adapt to climate change, with a focus on health inequalities.



Heat vulnerabilities index – Hampshire JSNA

Summary: How can we work together?

1. Transport – air quality
2. Physical activity – modal shift
3. Urban environments – healthy streets, greening and green spaces, buildings – best practice and retrofit
4. Behaviour change campaigns
5. Share good practice
6. Focus on most vulnerable take health equity into account, listen to residents
7. Develop a joint multi-agency HLOW adaptation plan.

